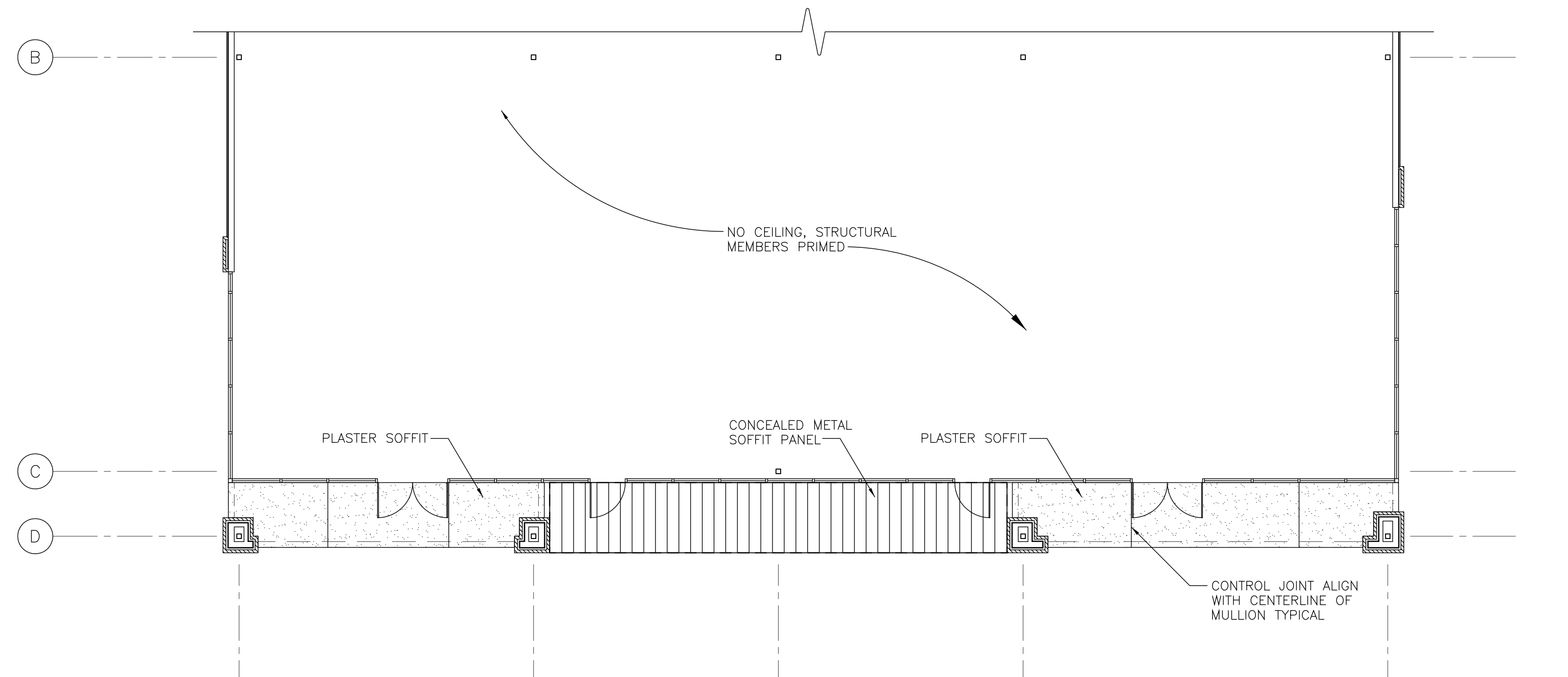


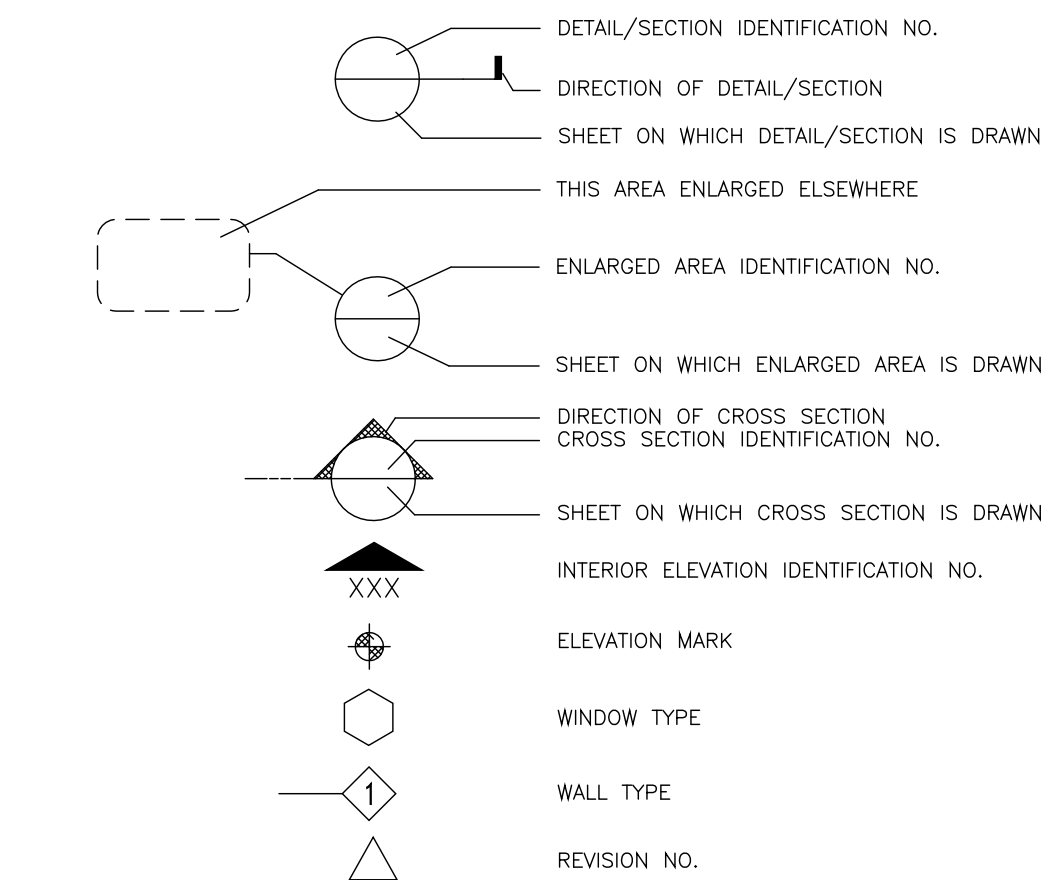
1
A2.0
ARCHITECTURAL FLOOR PLAN
1/8" = 1'-0"



2
A2.0
SOFFIT PLAN
1/8" = 1'-0"

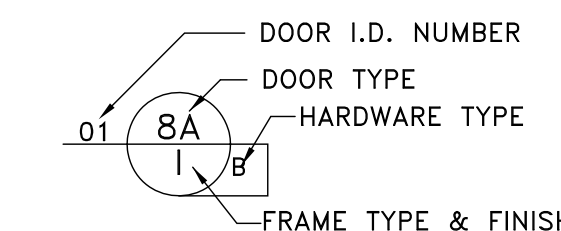
- DATUM LINE SHALL BE ESTABLISHED AS GROUND LEVEL FINISH FLOOR, UNLESS OTHERWISE NOTED ON THE DRAWINGS.
- DIMENSIONS SHOWN ON DRAWINGS ARE TO FACE OF MASONRY, CENTER LINE OF COLUMN OR GRID LINE, OR TO THE FACE OF STUD PARTITIONS, UNLESS OTHERWISE NOTED.
- UNLESS OBVIOUSLY SHOWN OTHERWISE, DOOR LOCATIONS NOT INDICATED BY DIMENSIONS SHALL BE CENTERED IN WALL OR SHALL BE LOCATED 3 INCHES FROM FINISH WALL TO EDGE OF DOOR BUCK.
- SEE SPECIFICATIONS FOR FINISHES OF CONCRETE, ALUMINUM, PAINT, ETC., WHICH ARE NOT NOTED ON DRAWINGS AND FINISH SCHEDULES.
- ALL GLASS WITHIN 18" OF FLOOR SHALL BE TEMPERED GLASS AND COMPLY WITH ANSI STANDARD Z97.1, 1975. INSTALLATION OF GLASS SHALL CONFORM TO FEDERAL SPECIFICATION CFR-1201.
- PROVIDE APPROVED GALVANIC BARRIER BETWEEN ALL STEEL AND ALUMINUM IN CONTACT.
- IN TYPICAL METAL STUDS THAT ARE NON-LOAD BEARING PARTITIONS, BRACES TO THE MAIN STRUCTURE SHALL BE PROVIDED EVERY 60 INCHES ON CENTER. (UNLESS OTHERWISE SHOWN ON DRAWINGS).
- THE GOVERNING CODE IS THE 2009 INTERNATIONAL BUILDING CODE AND ALL APPLICABLE STATE AND LOCAL ORDINANCES.
- THE CONTRACTOR SHALL VERIFY THE CONDITIONS OF THE SITE AND REPORT ANY DISCREPANCIES TO THE ARCHITECT BEFORE PROCEEDING WITH THE WORK.
- ALL EXTERIOR WALL OPENINGS, FLASHING, COUNTER FLASHING, AND EXPANSION JOINTS, SHALL BE CONSTRUCTED IN SUCH A MANNER AS TO MAKE THEM WEATHERPROOF.
- THE JUNCTION OF THE ROOF AND VERTICAL SURFACES SHALL BE FLASHED AND COUNTERFLASHED IN A MANNER TO MAKE THEM WEATHERPROOF.
- ALL CONCRETE SIDEWALKS TO BE 4" THICK w/W1.4 x W1.4 REINF. PROVIDE EXPANSION JOINTS AT 20'o.c.(max.) AND CONTROL JOINTS AT 4'o.c.(max.).
- UNLESS OTHERWISE NOTED, ALL MASONRY WALLS ARE TO HAVE VERTICAL EXPANSION JOINTS AT 24'o.c.(max.).
- ALUMINUM THRESHOLD 1/2" TALL(max.) TO BE SET IN A FULL BED OF SEALANT AT ALL EXTERIOR DOORS.
- ALL WOOD BLOCKING, STRONGBACKS, STUDS, ETC. SHALL BE FIRE RETARDANT WOOD.
- ALL DECORATIONS USED SHALL BE NON-COMBUSTIBLE OR FLAMEPROOFED IN AN APPROVED MANNER BY THE GOVERNING CODE.
- THERE WILL BE NO HIGH PILED STORAGE AS DEFINED BY CHAPTER 23 OF IFC
- THERE WILL BE NO STORAGE OF HAZARDOUS MATERIALS EXCEEDING THE AMOUNTS ON TABLE 2703.1.1 OF IFC

3
A2.0
ARCHITECTURAL GENERAL NOTES



4
A2.0
DRAFTING SYMBOLS

DOOR TYPE SCHEDULE



- GLASS & DOOR NOTES:
- ALUM./GLASS DOOR TO BE "MEDIUM STYLE" 3'x7' DOOR.
 - EXCEPT GLASS DOOR, ALL GLASS TO BE INSULATED DOUBLE PANE w/EXTERIOR TINTED LOW-E GLASS.
 - ALL FRAMES CLEAR ANODIZED ALUMINUM.
 - PROVIDE SAFETY GLASS AS REQUIRED BY CODE

HARDWARE SCHEDULE

H.W. SET 1	H.W. SET 2	H.W. SET 3
1 1/2 PR BUTTS	3 PR BUTTS	1 1/2 PR BUTTS
1 EA. PUSH/PULL	2 EA. PUSH/PULL	1 EA. PANIC/EXIT DEVICE
1 EA. DEADBOLT WITH OPEN/CLOSE INDICATOR	2 EA. SURFACE MTD. VERTICAL ROD w/TOP & BOT. LATCHBOLTS	1 EA. CLOSER
3 EA. WEATHER STRIPPING	1 EA. DEADBOLT WITH OPEN/CLOSE INDICATOR	3 EA. WEATHER STRIPPING
	2 EA. CLOSER	
	3 EA. WEATHER STRIPPING	

DOOR FRAME SCHEDULE

HM - HOLLOW METAL (SEMI-GLOSS PAINT FINISH)
WELDED JOINTS, 16ga. MATERIAL
AL - ALUMINUM (CLEAR ANODIZED COLOR FINISH)

DOOR / HARDWARE / FRAME NOTES

- ALL HARDWARE TO BE LEVER HANDLE TYPE MEETING ADA & INTERNATIONAL FIRE CODE REQUIREMENTS.
- DOOR CLOSERS SHALL BE ADJUSTED SO THAT FROM AN OPEN POSITION OF 90°, THE DOOR WILL TAKE 5-SEC. TO MOVE TO A POINT 12" FROM LATCH.
- EXTERIOR DOORS SHALL BE SIZE-4 CLOSERS WITH A MAX. PUSH/PULL FORCE OF 5LBS.
- CONTRACTOR SHALL COORDINATE ALL DOORS AND DETAILS FOR PROPER CLEARANCE AND REINFORCEMENT FOR THE HARDWARE INDICATED.
- CONTRACTOR SHALL ENSURE THAT ALL DOOR UNDERCUTS ARE PROPERLY COORDINATED WITH FLOOR FINISHES & THRESHOLDS PRIOR TO ORDERING DOORS.
- CONTRACTOR SHALL COORDINATE ALL FRAME TYPES WITH WALL THICKNESS WHERE THESE WILL BE INSTALLED.

6
A2.0
DOOR SCHEDULE, NOTES & HARDWARE SCHEDULE

- WHERE REQUIRED BY CODE, ALUMINUM VERTICAL MULLIONS SHALL RECEIVE STEEL STIFFENER TO ACHIEVE MINIMUM REQUIREMENTS TO CONFORM WITH WIND SPEED CRITERIA 1/4" THICK GLASS SHALL HAVE A MAXIMUM SIZE OF 43 SQUARE FEET.
- ALUMINUM AND GLASS STOREFRONT FRAMING SHALL BE 4-1/2" DEEP ANODIZED ALUMINUM SECTIONS WITH 1/4" CLEAR FLOAT ANNEALED AND TEMPERED GLASS PER CODE.
- REFER TO BUILDING ELEVATION DRAWINGS FOR FINISH MATERIAL CALLOUTS AND PAINT REQUIREMENTS.
- REFER TO ROOF PLAN FOR DOWNSPOUT LOCATIONS.
- PROVIDE VAPOR BARRIER UNDER ALL FLOOR SLABS AND LEVEL FILL PER SPECIFICATIONS.
- DO NOT SCALE THESE DRAWINGS FOR DIMENSIONAL INFORMATION. REFER TO DIMENSIONS ON THE FLOOR PLAN(S). IF THERE IS A CONFLICT WITH THE PLAN DIMENSIONS OR WITH AN EXISTING FIELD CONDITION, CONTACT THE ARCHITECT.
- PROVIDE 5/8" THICK GYPSUM BOARD THROUGHOUT THE PROJECT, UNLESS NOTED OTHERWISE (TYPE "X" IF REQUIRED).
- DIMENSIONS ARE TO FACE OF STUDS, STRIPPING, FACE OF EXTERIOR WALL/STOREFRONT OR CENTERLINE OF COLUMN, AS INDICATED.
- SEAL PARTITIONS EXTENDING TO DECK, ON EACH SIDE.
- OPENINGS REQUIRED BY MECHANICAL AND ELECTRICAL APPARATUS WALLS IN EXPOSED AREAS SHALL BE SEALED AIR TIGHT.
- UNLESS OTHERWISE NOTED, WALLS ENCLOSING COLUMNS SHALL BE CENTERED ON COLUMN LINES.
- MAXIMUM CLEAR SPAN HEIGHTS FOR INTERIOR METAL STUDS SHALL BE SUCH THAT DEFLECTION UNDER A 5 P.S.F. LATERAL LOAD SHALL NOT EXCEED 1/120.
- ALL FIRE WALL PENETRATIONS SHALL BE SEALED WITH FIRE RATED FOAM SEALANT (BOTH SIDES OF WALL) SEALANT TYPE SHALL HAVE A COMPATIBLE RATING WITH THE WALL SYSTEM.
- WOOD FRAMING, BLOCKING, SHEATHING OR BRACING SHALL BE FIRE RETRDANT TREATED (UNLESS NOTED OTHERWISE).

7
A2.0
FLOOR PLAN GENERAL NOTES

NEW OFFICE SHELL BUILDING

JURISDICTION HARRIS CO.
BUILDING CODE ADOPTED 2012 IFC / IBC
CONSTRUCTION TYPE TYPE IIB

BUILDING AREA 7,500 SF TOTAL
B OFFICES 7,500 SF @ 100 OCC/SF = 75 OCC

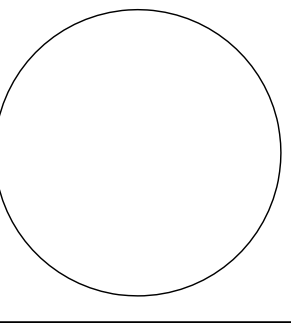
ALLOWABLE AREA CALCULATIONS
TABULAR ALLOWABLE AREAS TABLE 503
B 23,000 SF

TOTAL ALLOWABLE AREA = 23,000 SF > ACTUAL 4,700 SF

ALLOWABLE HEIGHT CALCULATIONS
TABULAR ALLOWABLE AREAS TABLE 503
B 55'-0"

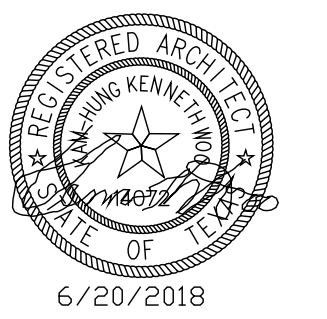
TOTAL ALLOWABLE AREA = 55'-0" > 25'-10"

DEFERRED SUBMITTAL:
• METAL BUILDING DRAWINGS SHALL BE PROVIDED BY THE GENERAL CONTRACTOR.



17211 IH45, Houston, Texas 77090

OWNERSHIP OF DOCUMENTS
THIS DOCUMENT, AND THE IDEAS AND DESIGNS INCORPORATED THEREIN AS AN INSTRUMENT OF PROFESSIONAL SERVICE IS THE PROPERTY OF KENNETH WOOD & ASSOCIATES AND IS NOT TO BE USED, IN WHOLE OR IN PART, FOR ANY OTHER PROJECT WITHOUT THE WRITTEN AUTHORIZATION OF KENNETH WOOD & ASSOCIATES



KWA

A2.0