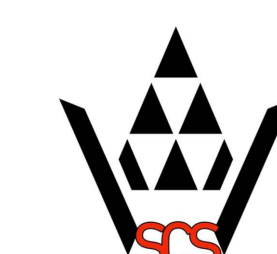


David A. Borengasser
6/04/18

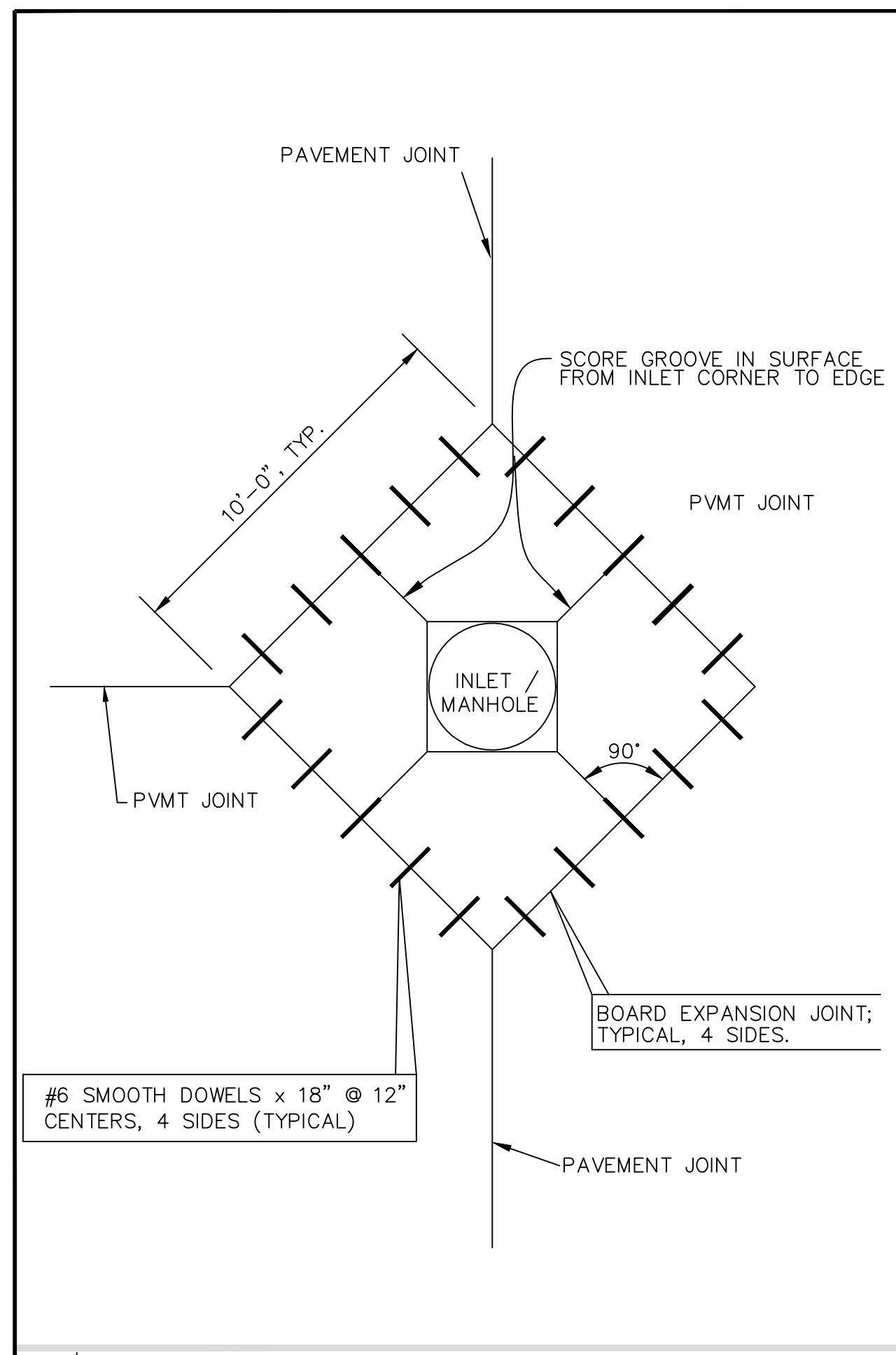


STEWART CONSULTING SERVICES
 CIVIL ENGINEERS | PLANNERS | CONSTRUCTION MGMT.
 TBPE FIRM F-17175
 P.O. BOX 82
 HUMBLE, TX 77347
 PH: (713)446-8537
 FAX: (281)858-2335
 www.stewartconsultingservices.com

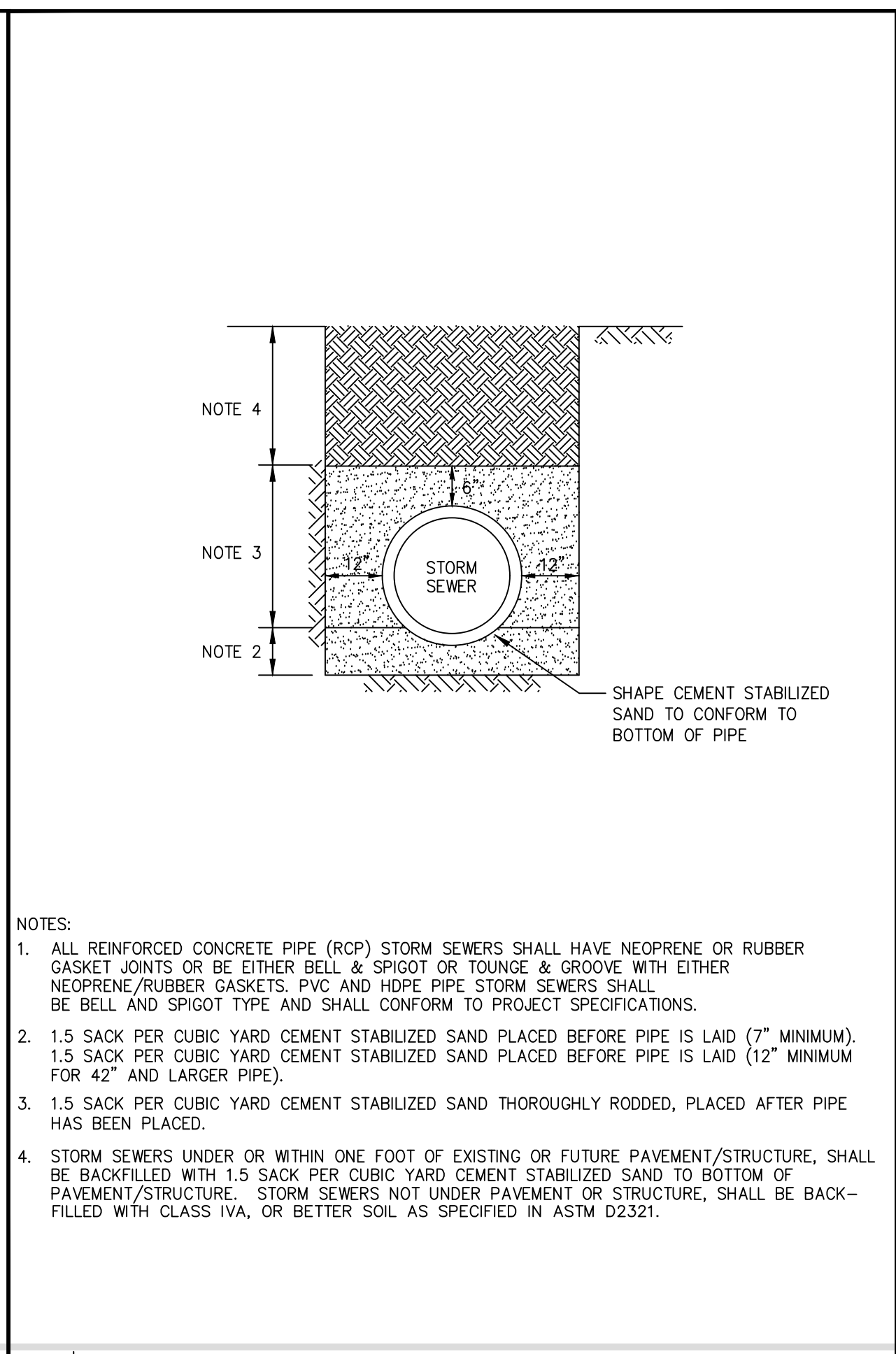
17211 PAD SITE
 17211 IH45
 HOUSTON, HARRIS CO., TX 77090

REV	ISSUE DATE	DESCRIPTION
0	06/04/2018	ISSUED FOR PERMIT/BID

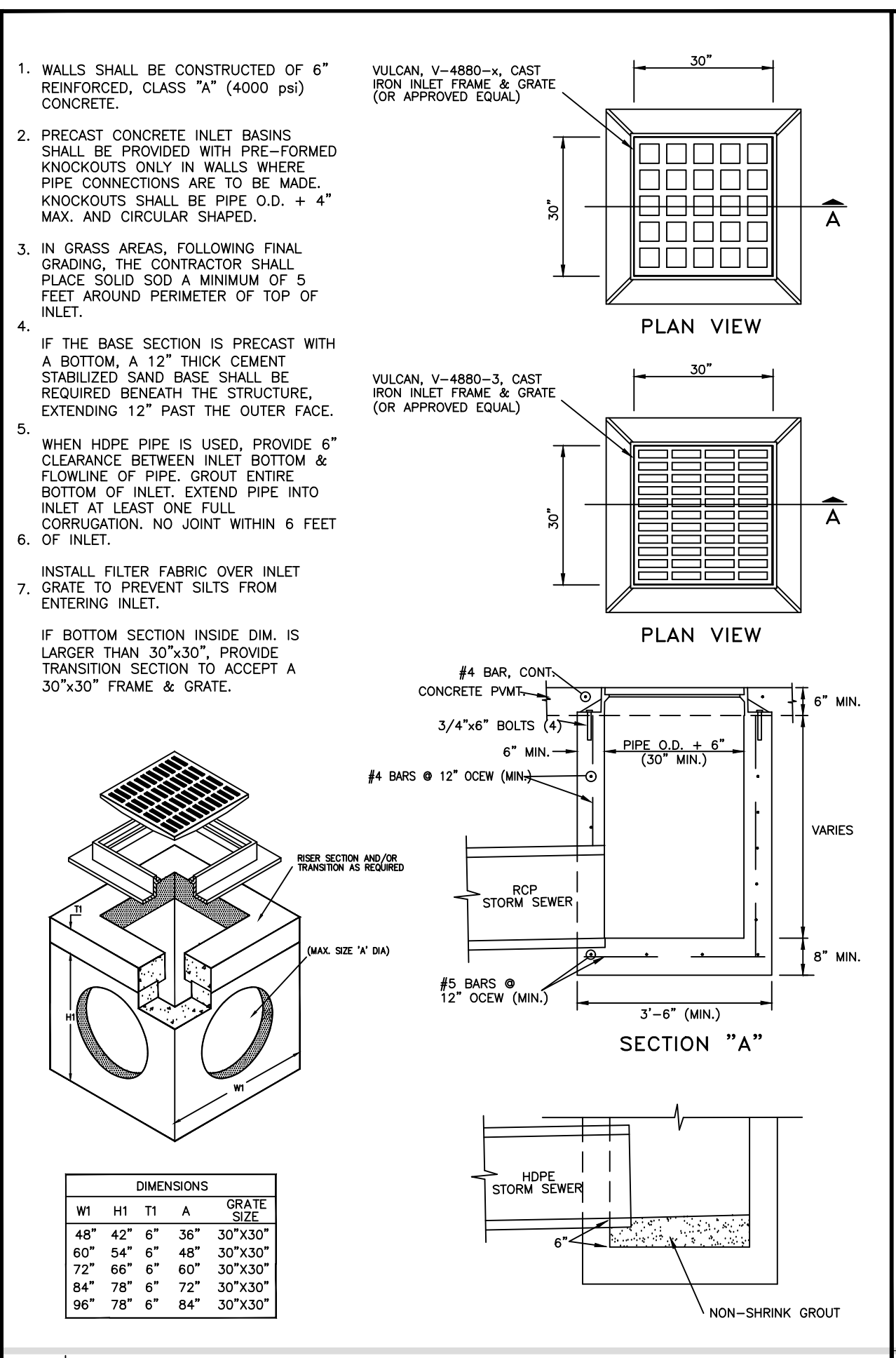
SHEET TITLE: **GENERAL DETAILS**
 PRJ NAME: 17211 PAD SITE
 SHEET NO: **C6.0**
 DATE: JUNE 03, 2018



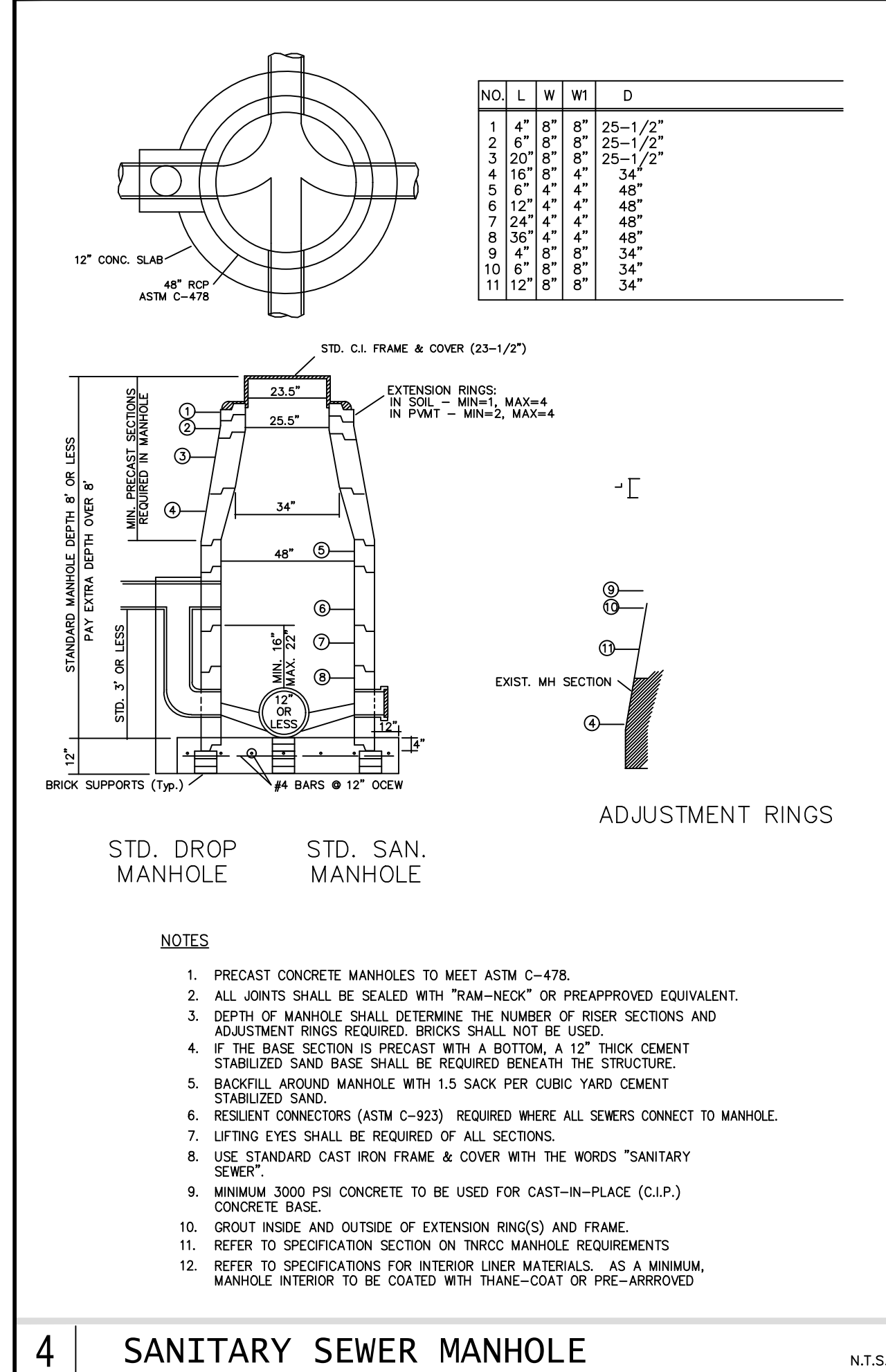
8 INLET / MANHOLE BLOCKOUT N.T.S.



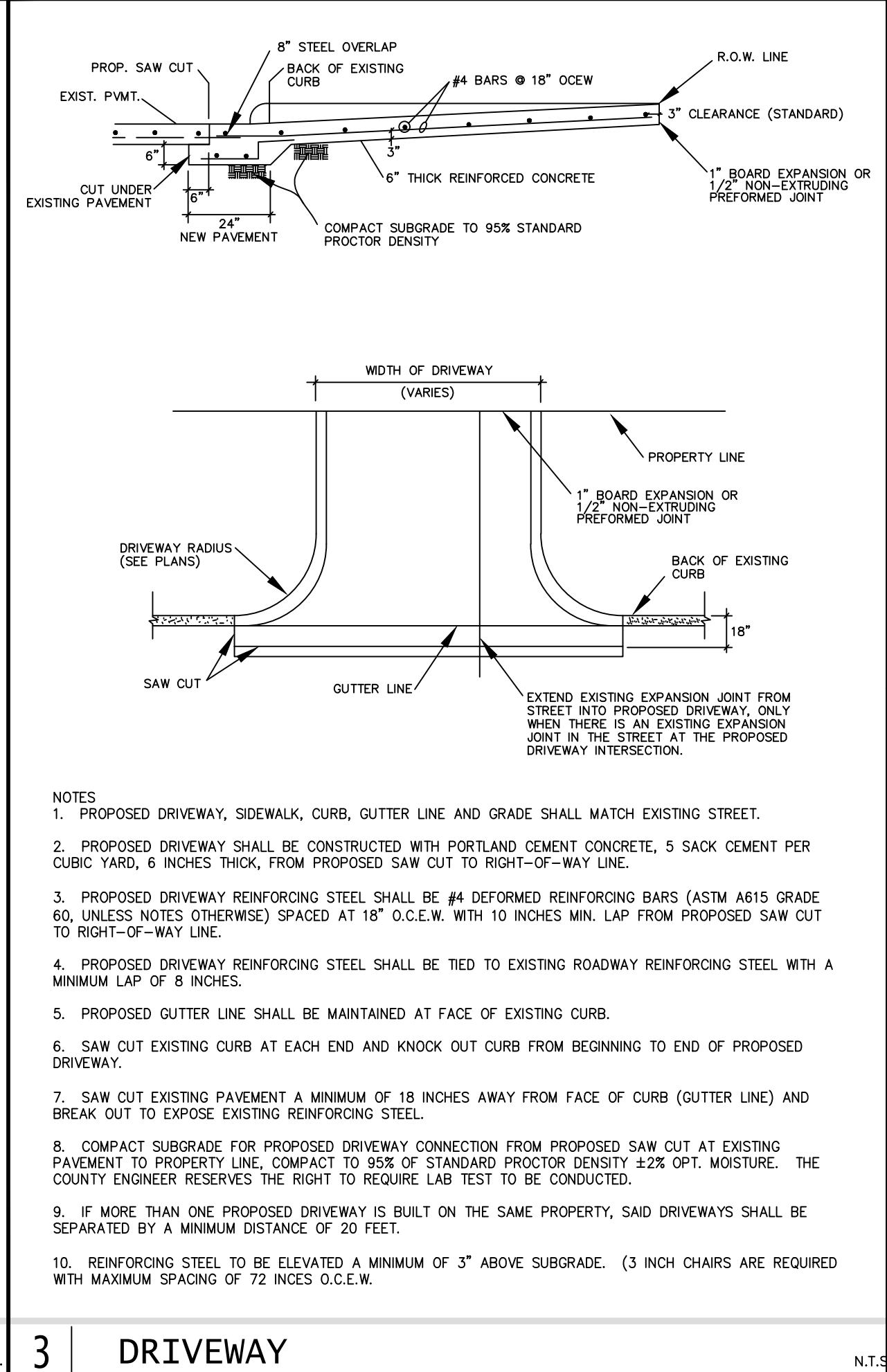
7 STORM SEWER BEDDING & BACKFILL N.T.S.



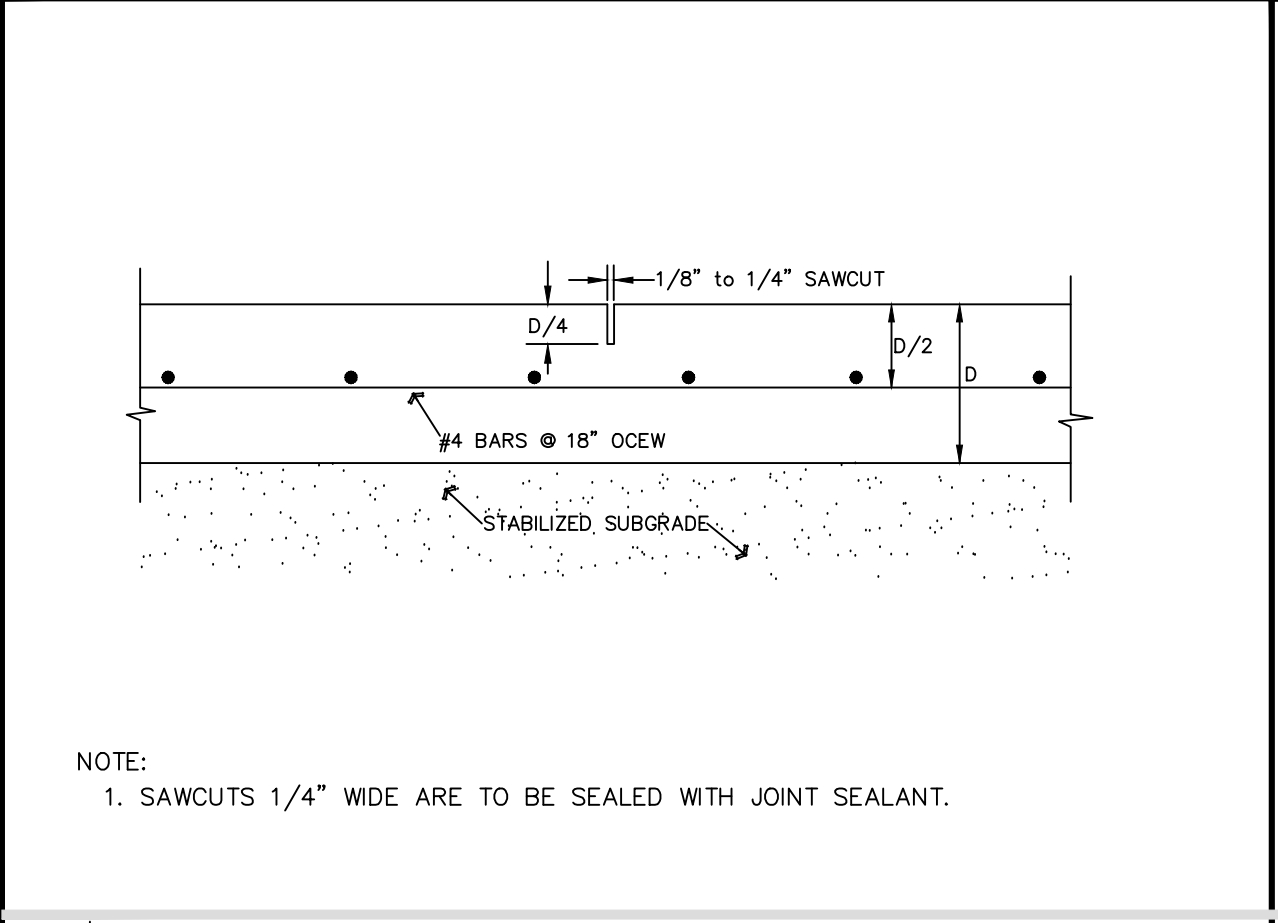
6 TYPE "A" INLET N.T.S.



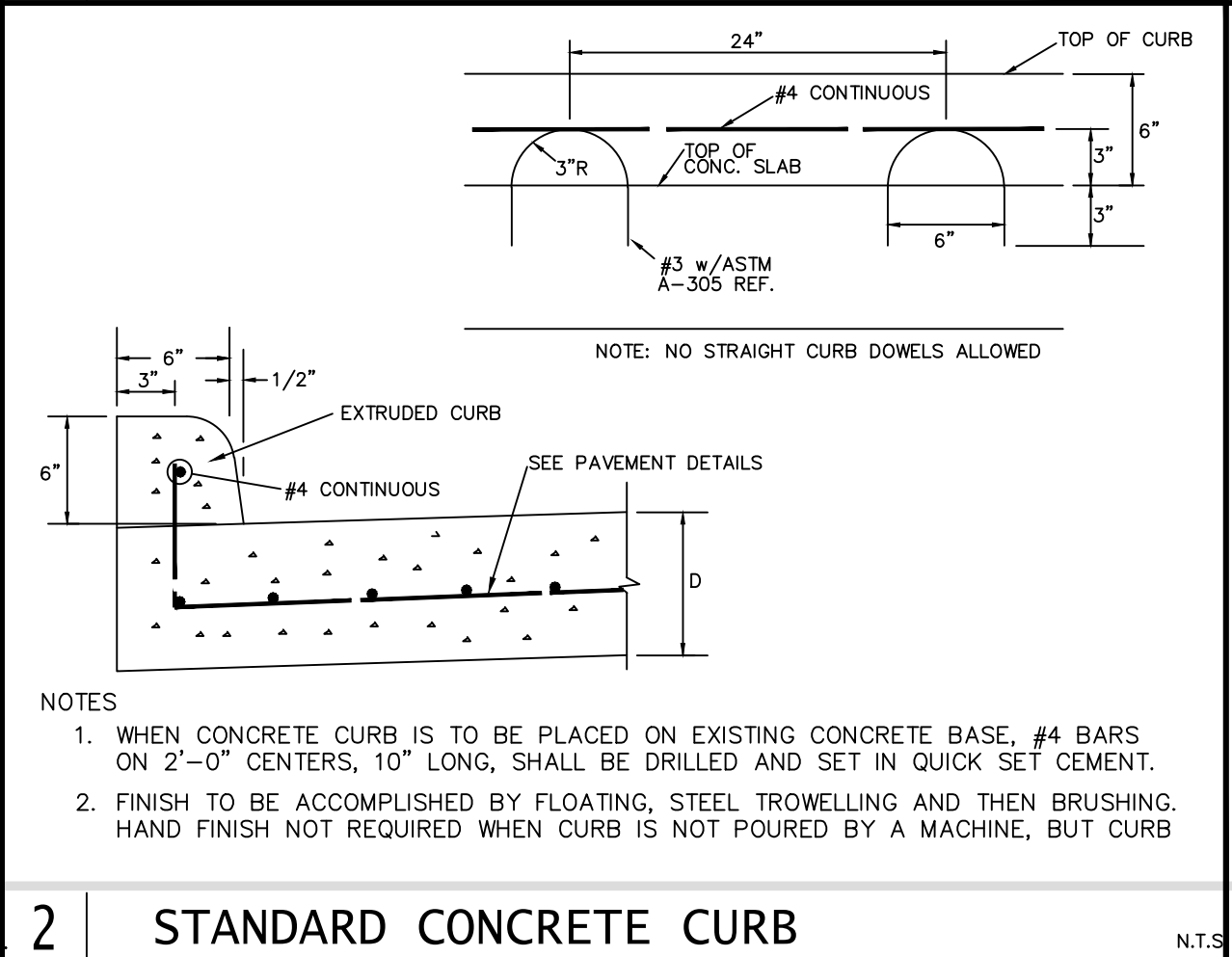
4 SANITARY SEWER MANHOLE N.T.S.



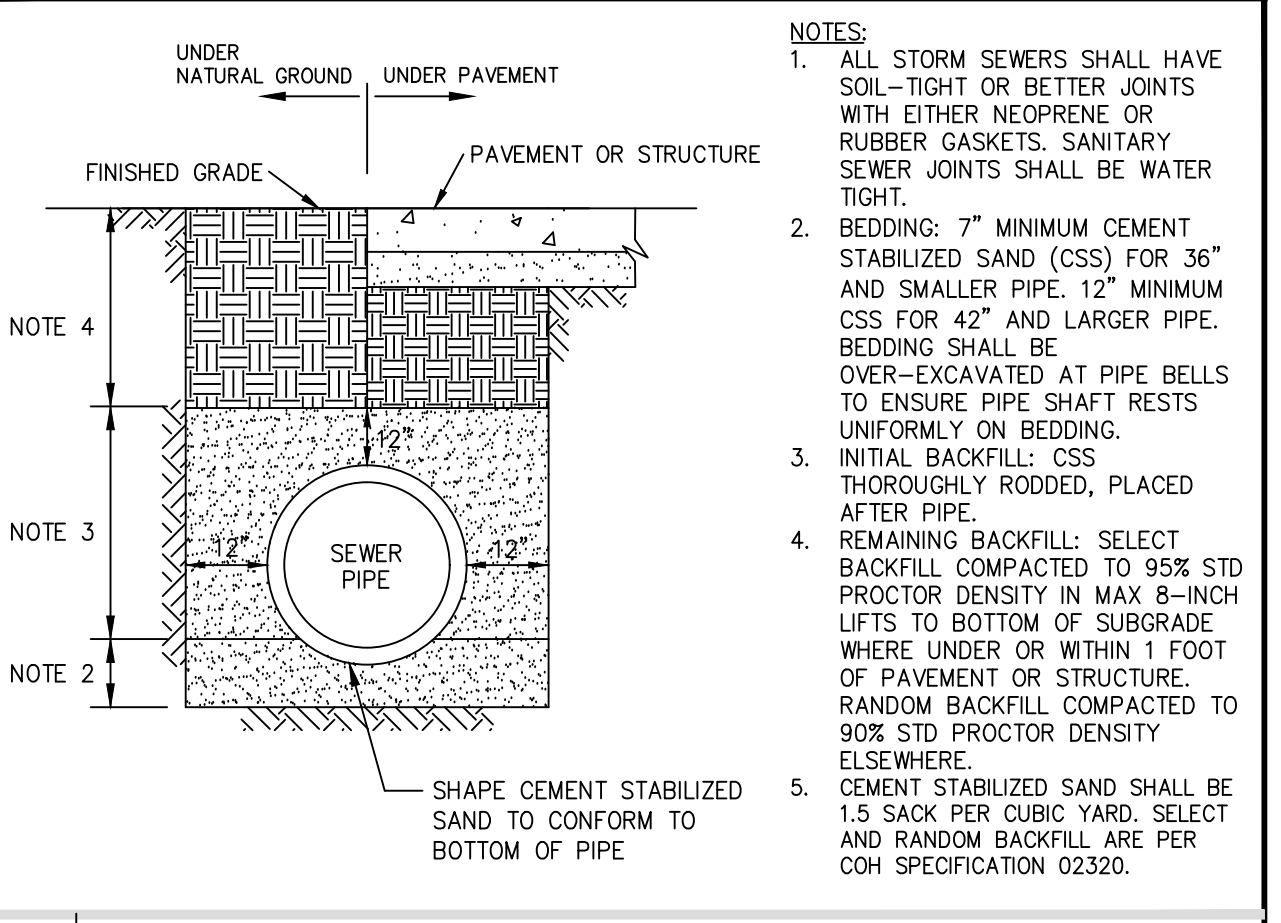
3 DRIVEWAY N.T.S.



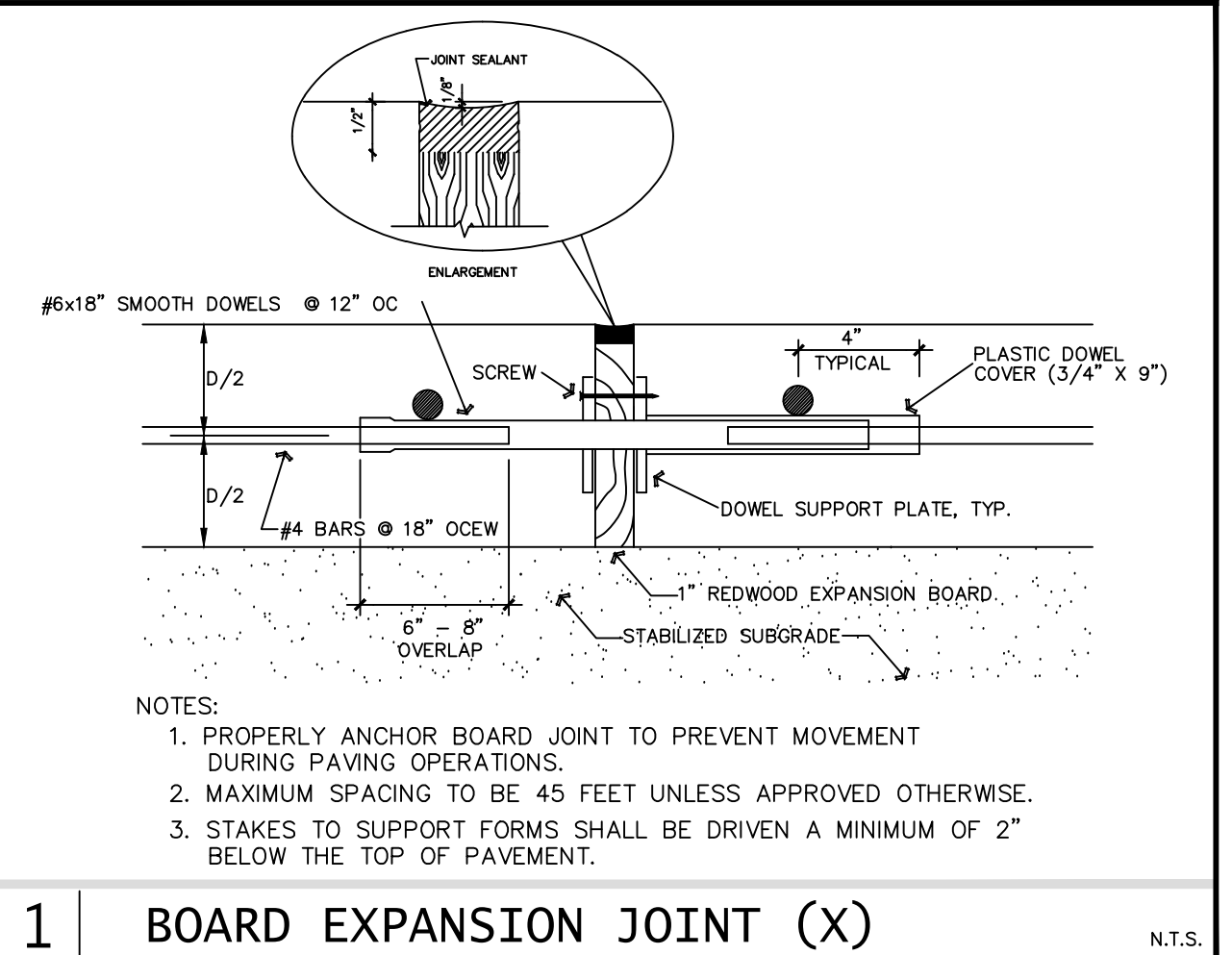
2A SAWED JOINT (S) N.T.S.



2 STANDARD CONCRETE CURB N.T.S.



1B SANITARY & STORM SEWER BEDDING & BACKFILL N.T.S.



1 BOARD EXPANSION JOINT (X) N.T.S.