

**JAMES E. THOMPSON & ASSOCIATES ENGINEERS**

First National Bank of Alvin Building  
1600 East Highway 6, Suite 331  
Alvin, Texas 77511  
T: (832)526-0160

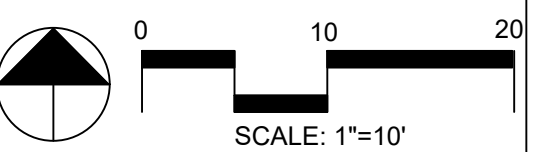
- Mechanical • Electrical •
- Plumbing Design •
- Firm Registration #F1288

Revision	Date:				
Client					
Architect					
Engineer					
General Contractor					
Sub-contractor					

PREPARED FOR:

NEW PROJECT  
SHELL BUILDING 1  
OVERLAND TRAILS DRIVE  
17211 IH 45  
HOUSTON, TX 77090

Drawn By:	Name	Date
Check By PIC:	JET	12/26/17
Check by PM:	JET	12/26/17
Approved By:	JET	12/26/17

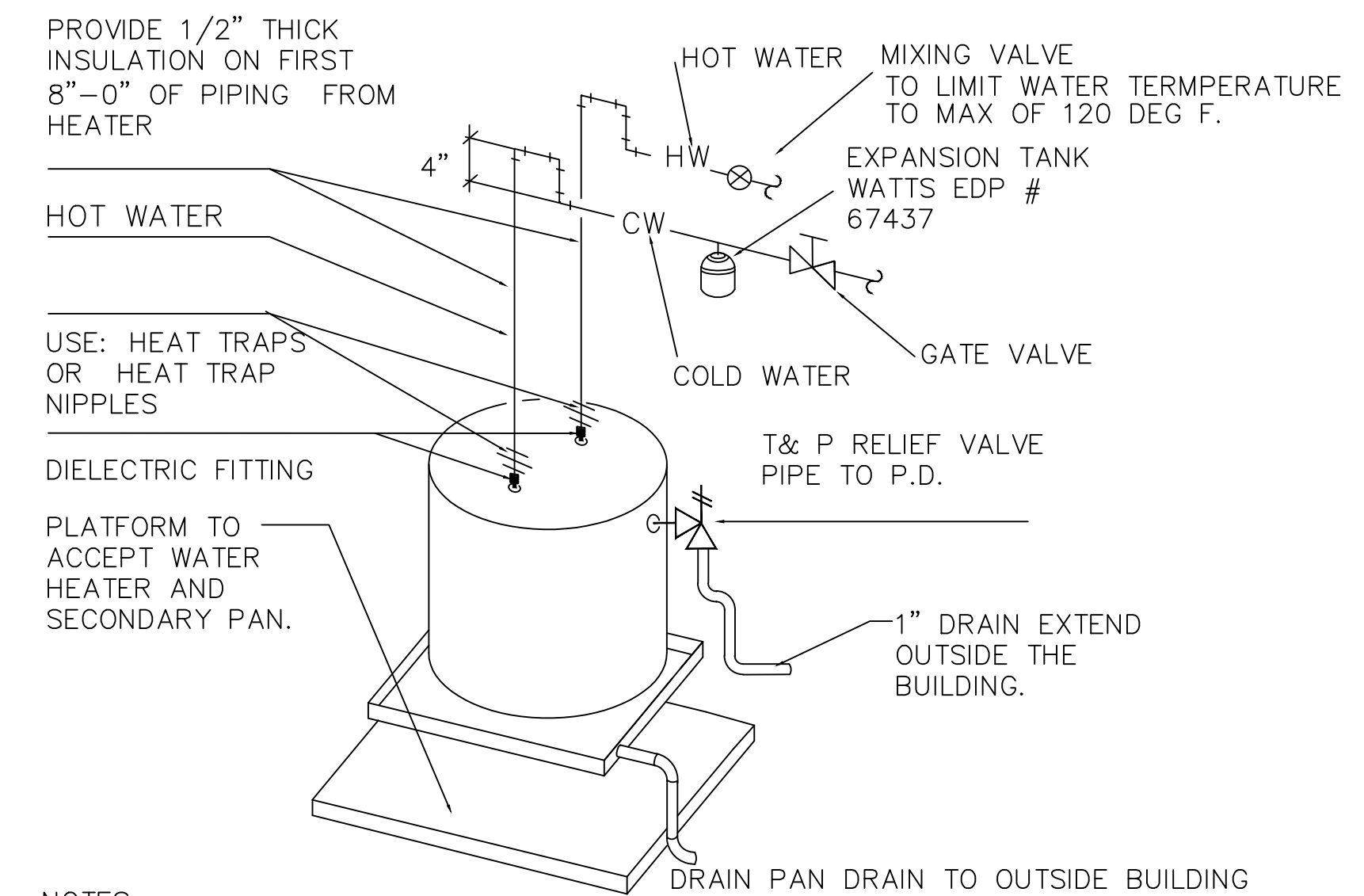
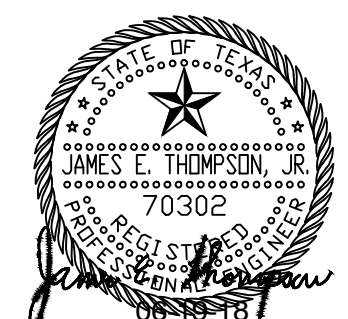


Date Created: 12/26/17

Project Number: -

Drawing Title: PLUMBING DETAILS

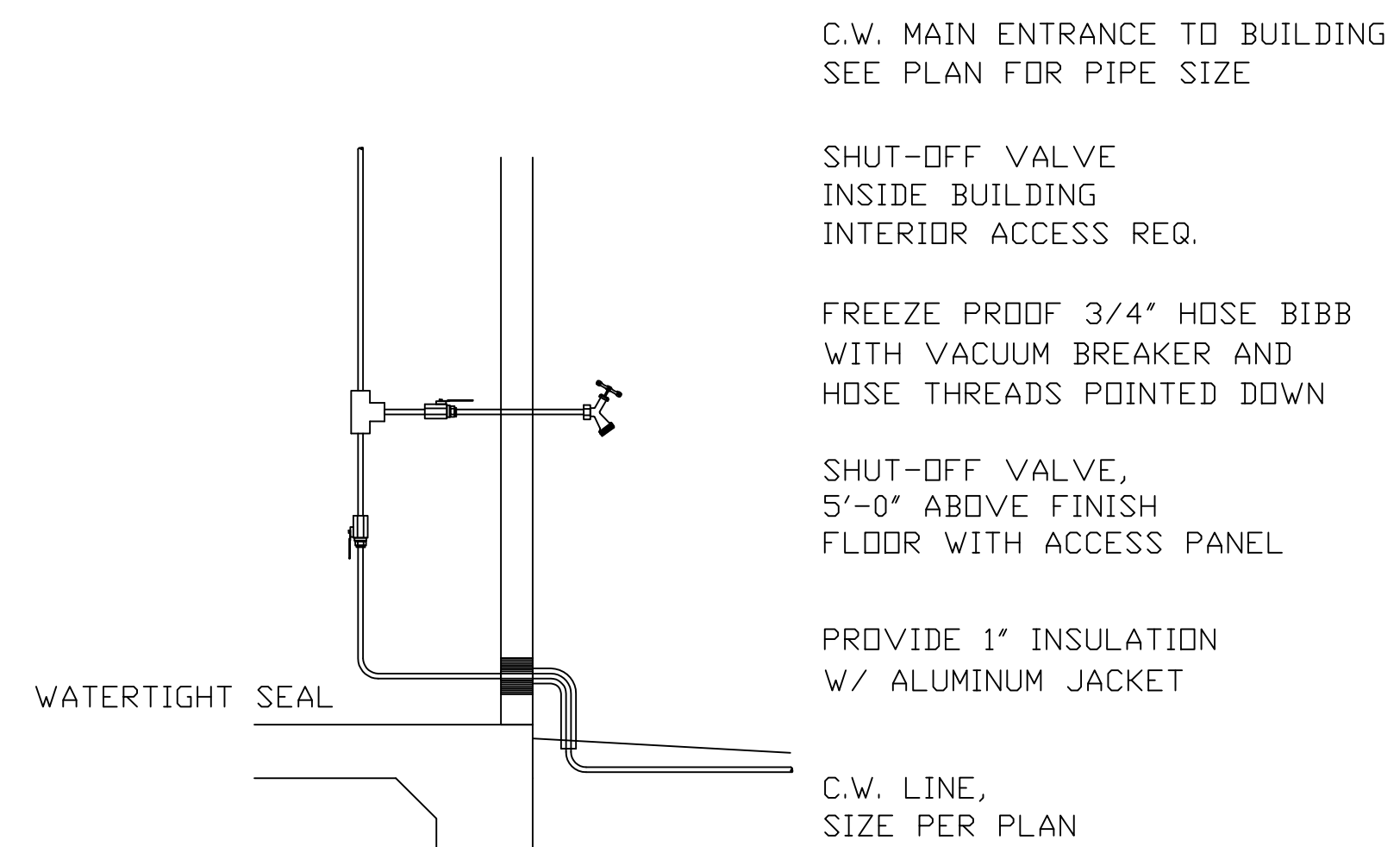
Sheet Number: P2.0



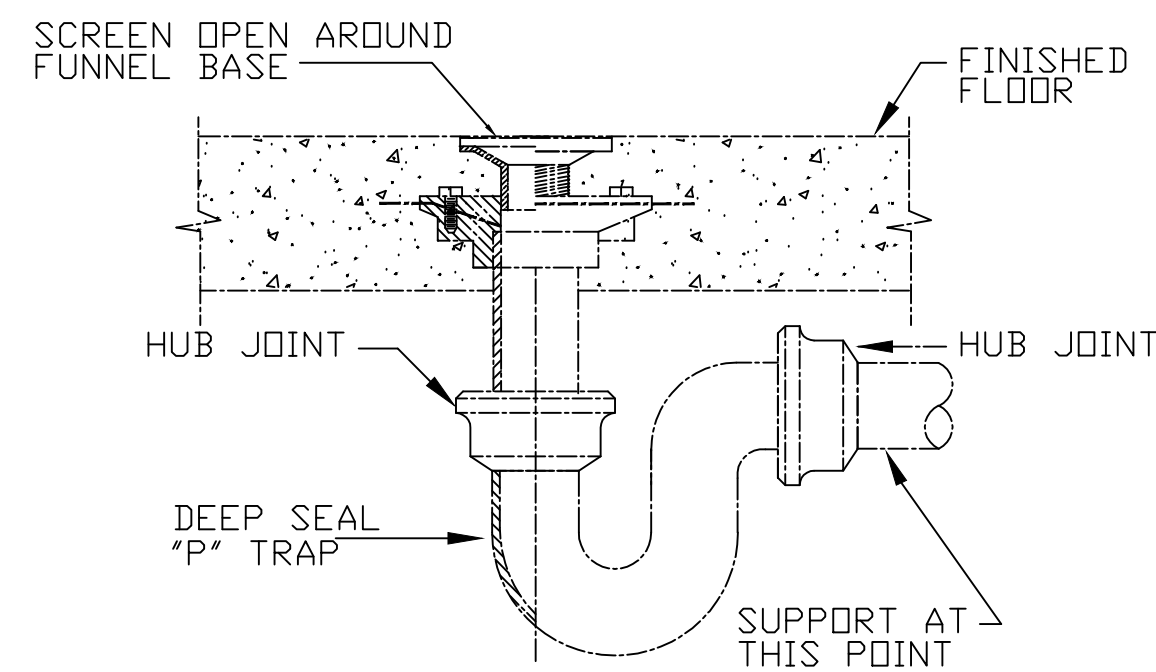
NOTES:

1. SECONDARY DRAIN PAN TO COVER THE UNDERSIDE OF THE UNIT. PAN SHALL BE MADE OF 24 GA. GALVANIZED SHEET METAL WITH COVERS SOLDERED AND PAINTER, INSIDE, WITH @ WATERPROOF PAINT COVERING. MINIMUM DEPTH 2-1/2" WITH A 1/2" DRAIN.
2. PRIMARY AND SECONDARY DRAINS TO BE ROUTED OUTSIDE BUILDING (SEE RISER, P2.0.)

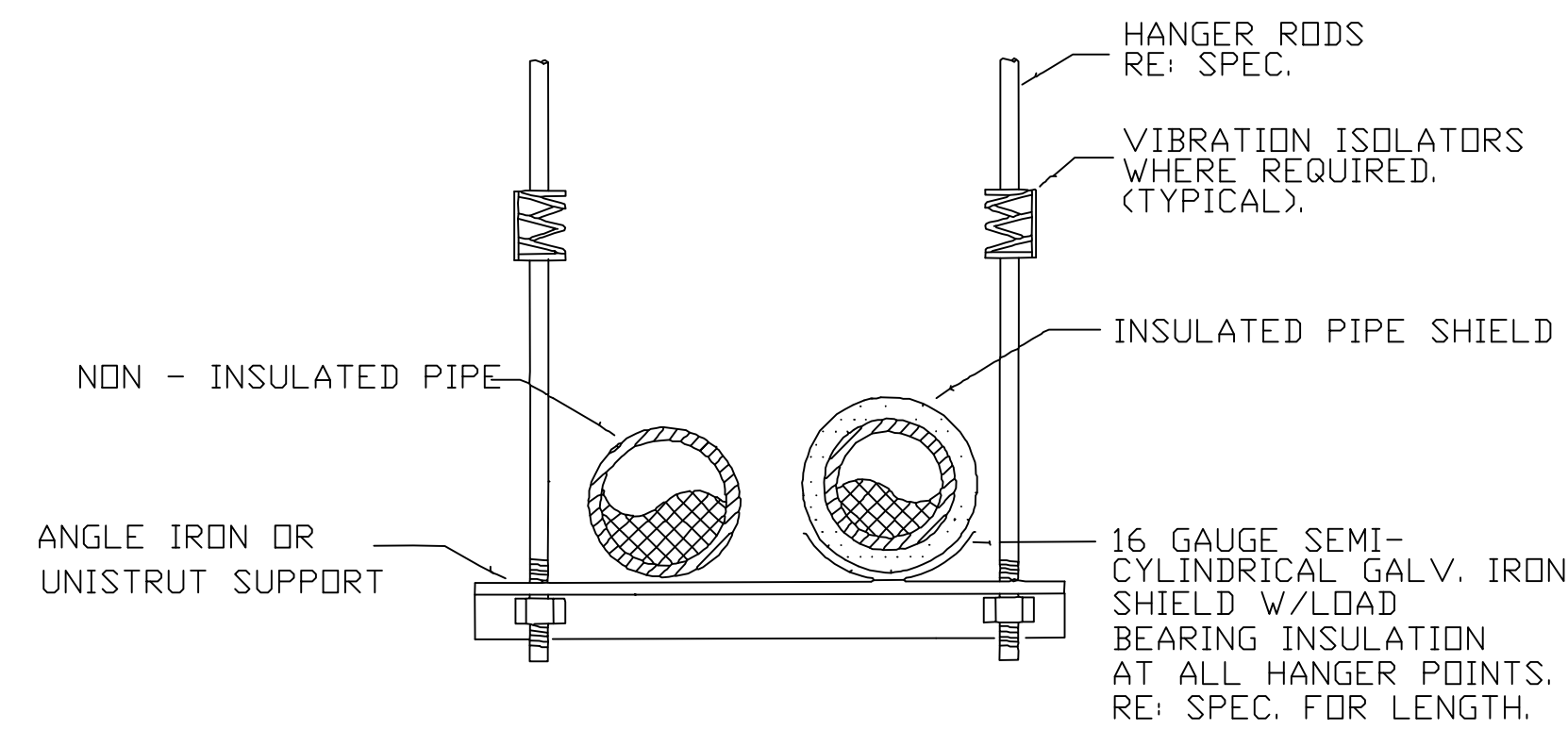
**4 WATER HEATER DETAIL**  
NOT TO SCALE



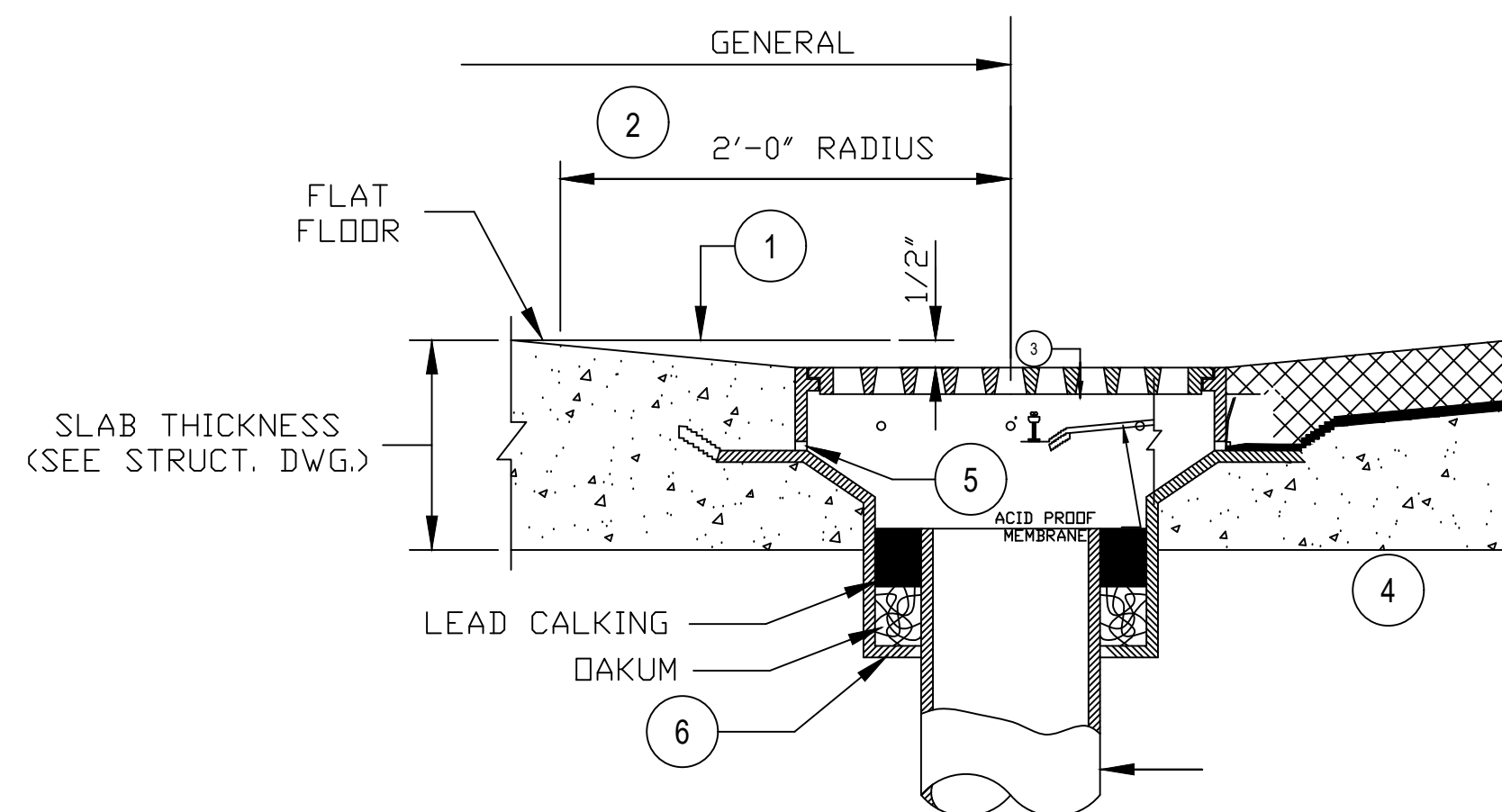
**5 TYP. WATER ENTRY DETAIL**  
NOT TO SCALE



**1 TYP. TRAP PRIMER DETAIL**  
NOT TO SCALE



**3 PIPE RACK DETAIL**  
NOT TO SCALE



**2 TYP. FLOOR DRAIN DETAIL**  
NOT TO SCALE

GENERAL NOTES:

1. FLAT FLOORS: INSTALL DRAIN WITH GRATE TOP 1/2" BELOW FINISHED FLOOR ELEVATION, SLOPE FLOOR TO FORM 4'-0" DIA DEPRESSION (UNLESS OTHERWISE NOTED ON DRAWING).
2. SLOPED FLOORS: INSTALL DRAIN WITH GRATE TOP AT FINISHED FLOOR LOW POINT.
3. CHEMICAL-RESISTANT FLOORS: INSTALL DRAIN AS ABOVE. CLAMPING DEVICE (FURNISHED WHEN ORDERED FOR MEMBRANE FLOORS).
4. PIPE SIZE & TRAP MATERIAL, AND JOINTING MATERIALS SHALL BE PER SPECIFICATIONS ON THIS DRAWING.
5. WEEP HOLES TO BE FREE OF CONCRETE.
6. DRAINS ILLUSTRATED ARE TYPICAL OF AVAILABLE MANUFACTURER TYPES. SEE TABLE 1 FOR SPECIFIC MODEL NUMBERS. (DRAINS ARE SUPPLIED WITH CALKED PUTLET UNLESS OTHERWISE NOTED.)

NOTES:

DETAILS ARE SHOWN FOR REFERENCE ONLY AND DO NOT NECESSARILY REQUIRE INSTALLATION EXCEPT AS MAY BE NEEDED FOR CODE COMPLIANCE.

**PLUMBING DETAILS**

NTS