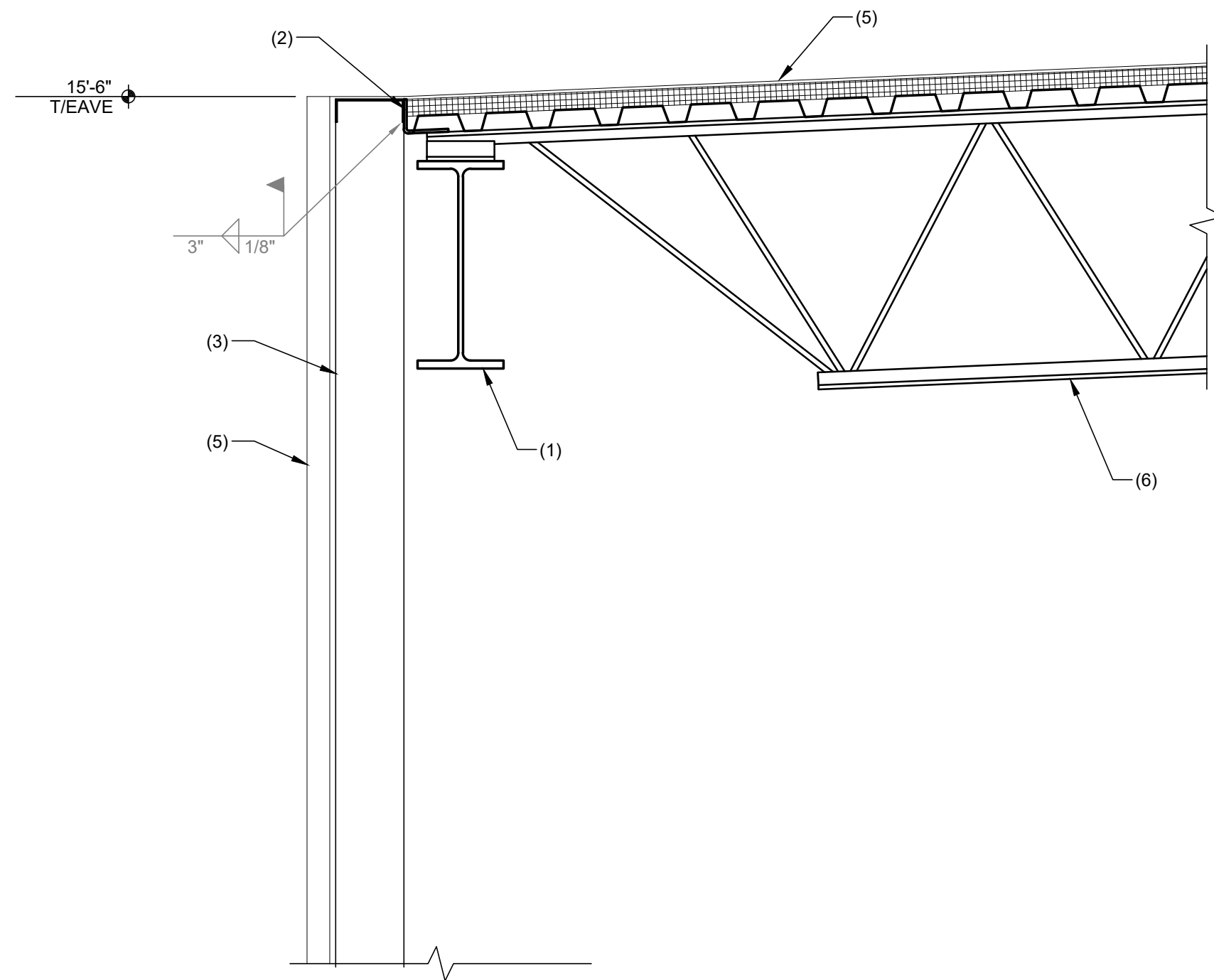


PLEASE RECYCLE

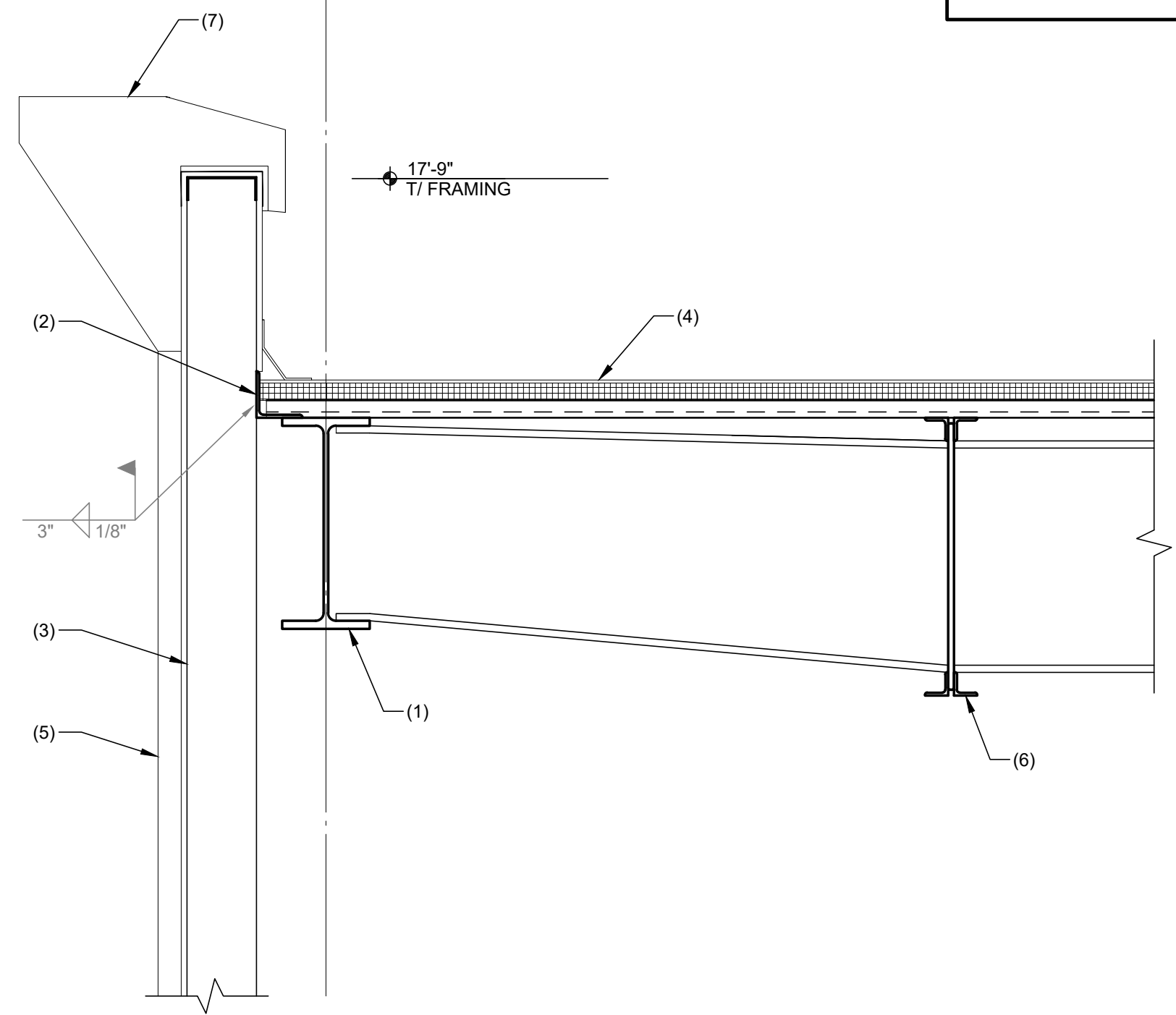
6
5
4
3
2
1

- (1) WF BEAM - SEE PLAN
- (2) L4x4x1/4 X CONT. - WELD TO EACH JOIST
- (3) NON BEARING 600 S 162-54 @ 18" O.C. W/ 600 T 125-54 CONT. AS SHOWN
- (4) METAL DECK AND ROOFING
- (5) STUCCO FINISH - RE: ARCH
- (6) BAR JOIST - SEE PLAN



2 SECTION AT EXTERIOR REAR

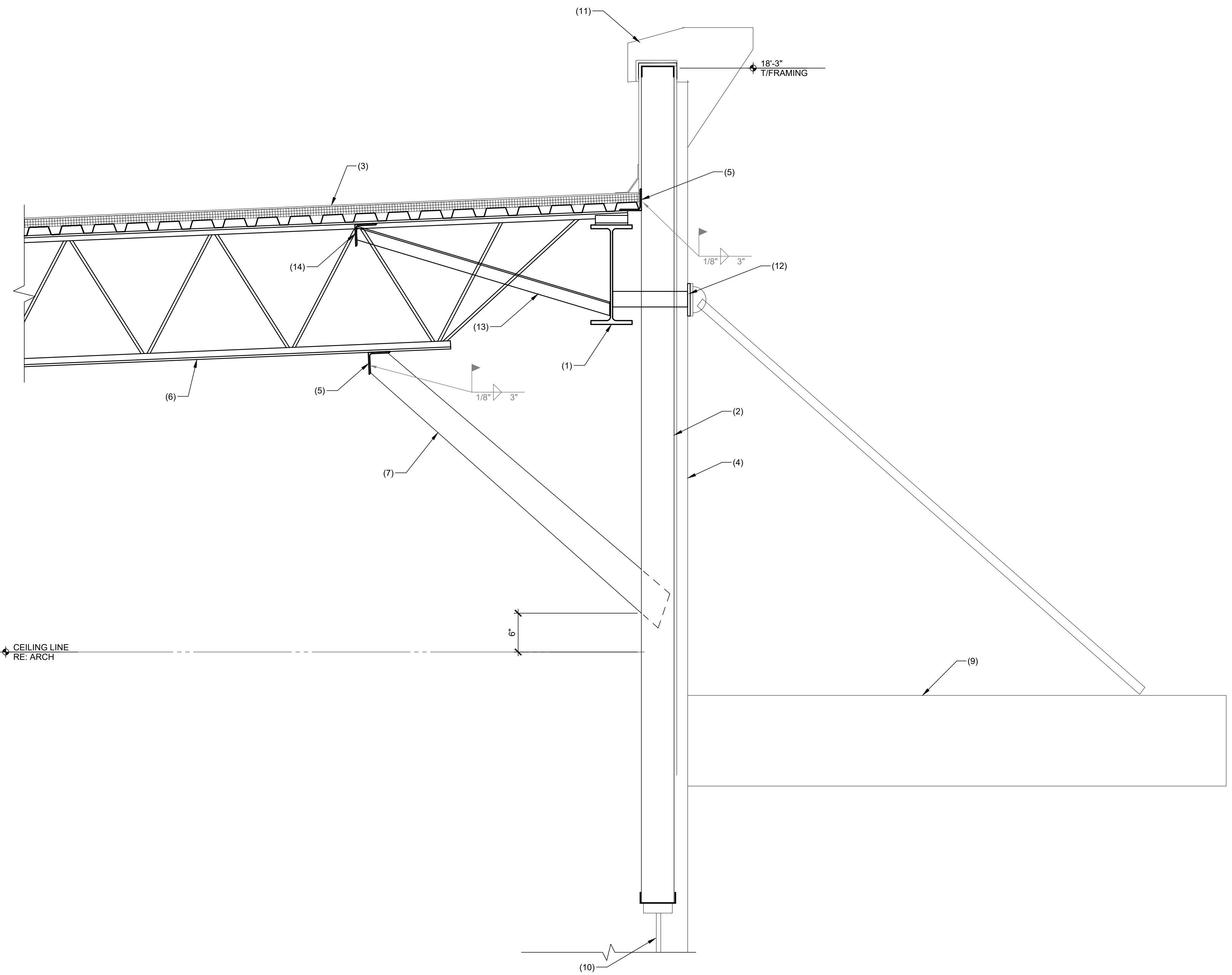
- (1) WF BEAM - SEE PLAN
- (2) L4x4x1/4 X CONT. - WELD TO BEAM
- (3) NON BEARING 600 S 162-54 @ 18" O.C. W/ 600 T 125-54 CONT. AS SHOWN
- (4) METAL DECK AND ROOFING
- (5) STUCCO FINISH - RE: ARCH
- (6) BAR JOIST - SEE PLAN
- (7) EIFS TRIM - RE: ARCH



2 SECTION AT EXTERIOR SIDE

1

E D C B A



1 SECTION AT EXTERIOR FRONT

- (1) WF BEAM - SEE PLAN
- (2) NON BEARING 600 S 162-54 @ 24" O.C. W/ 600 T 125-54 CONT. AS SHOWN
- (3) METAL DECK AND ROOFING
- (4) STUCCO FINISH - RE: ARCH
- (5) L4x4x1/4 CONT. - WELD TO EACH JOIST
- (6) STEEL BAR JOIST - SEE PLAN
- (7) S 162-54 DIAGONAL @ 48" O.C. LAP AND FASTEN W/ 4 - #12 SCREWS AS SHOWN
- (8) 1/4" CLIP ANGLE @ EACH STUD W/ 4 - #12 SCREWS EACH LEG
- (9) PRE-FABRICATED METAL CANOPY BY OTHERS - RE: ARCH
- (10) STOREFRONT WINDOW SYSTEM BY OTHERS - RE: ARCH
- (11) EIFS TRIM - RE: ARCH
- (12) 3" DIA PIPE WELDED TO BEAM WITH 3/8" THREADED FLANGE PLATE FOR CANOPY CONNECTION. TYP. EACH CANOPY SUPPORT.
- (13) <3X3X1/4 DIA KICKER AT CANOPY CONNECTION WELDED EA. END
- (14) <4X4X1/4 BETWEEN JOISTS AT DIAG. KICKER WELD TO JOIST EACH END.

ISSUE/REVISION	NO.	DATE
ISSUE FOR PERMIT & PRICING		06/13/2018
WWW.BIGREDDOG.COM		
TEXAS REG. NO. F-11201		
832.431.4560		
6-13-18		
PROJECT:	17211 PAD SITE 17211 145 SOUTH - Houston, TX 77090	
SHEET TITLE:	Framing Details	
S401		
SCALE: 1" = 1'-0"		